



CALIPER GAUGE



HOW TO USE STOLZ CALIPER GAUGE

- Brake Caliper and Wheel Spacing Check Guide

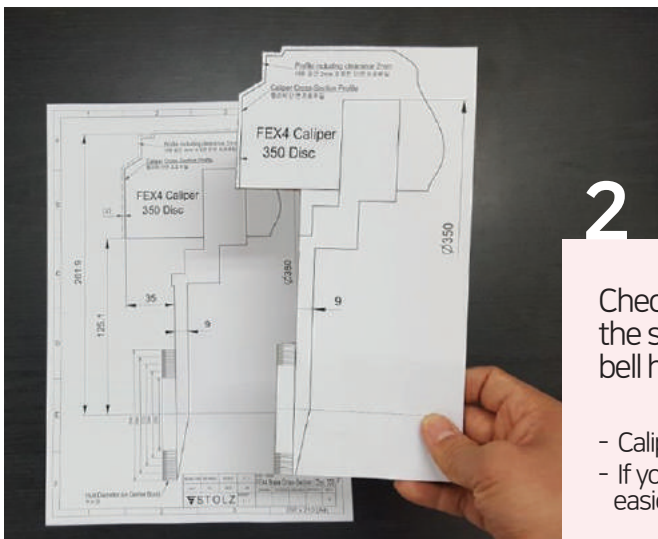
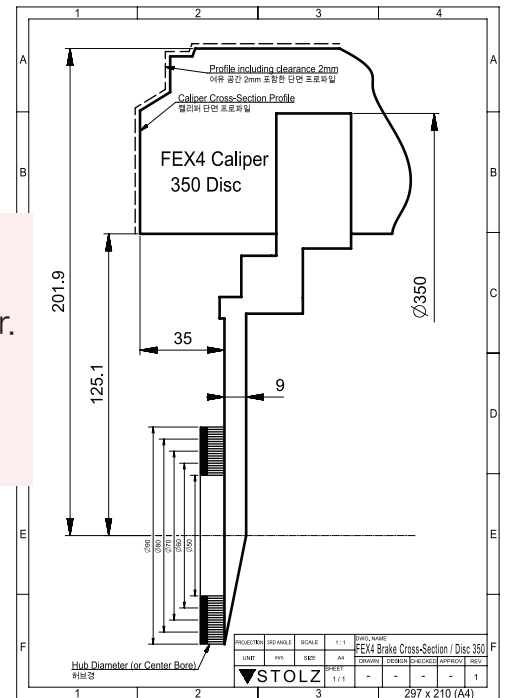
When purchasing the Stolz brake, it is necessary to check whether it can be mounted on the applicable vehicle wheel. To check whether it is installed, print the caliper gauge drawing provided on [Stolz webpage \(http://www.stolzbrake.com/eng/\)](http://www.stolzbrake.com/eng/) and check whether it is spaced on the back side (hub side) of the wheel.

- How to use

1

Download or open the caliper gauge drawing PDF file of corresponding product from Stolz website (www.stolzbrake.com/eng/) and print it out on A4 paper. (1:1 or 100%)

- After printing, measure the dimensions of the drawing to show the actual dimensions.



2

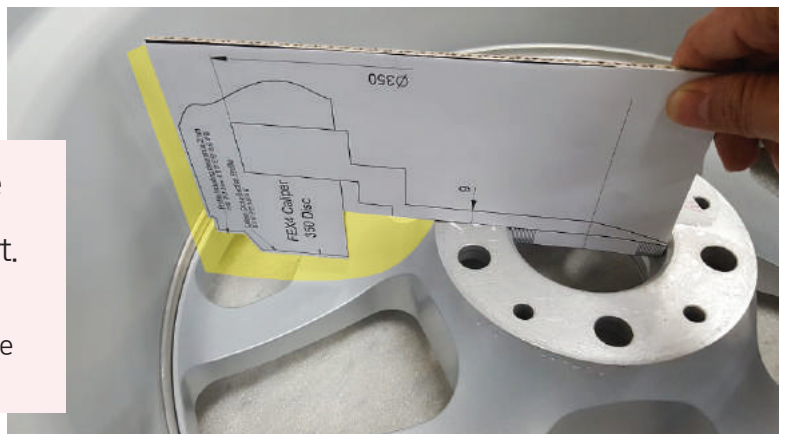
Check the hub diameter of the applied wheel and cut into the shape of the figure including the hub, caliper, disc and bell housing according to the gauge hub diameter.

- Caliper cutout with 2mm clearance
- If you stick to corrugated cardboard or form core after cutting, it is easier checking on the gauge of your wheel.

3

Place the gauge cut on the rear part of the wheel (hub surface) and check whether it can be mounted on the inner diameter part.

- If the caliper gauge comes into contact with the inside of the wheel, use a wheel spacer or upgrade it with a larger inch wheel



< To prevent interference between the caliper and the wheel, we recommend 2mm of clearance. The yellow mark on the image is the total free space.